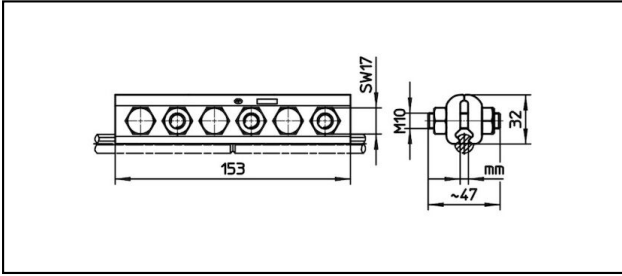
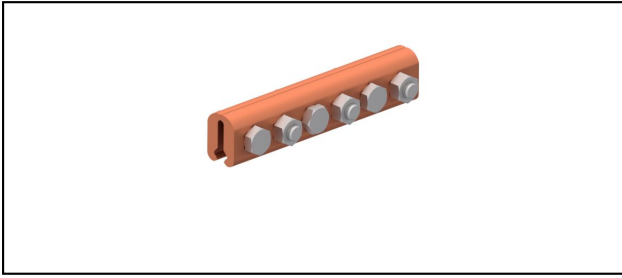


Splice fittings

■ **SKF6-153** Splice fitting



Application

Contact wire splice fitting for copper or copper alloy contact wire

Characteristics

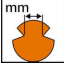
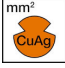
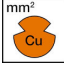
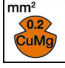
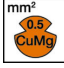
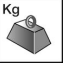

Torque 50 Nm

Material

Clamping plates CuNiSi

Legend

- 1) With washer with spherical seal
- 2) Special high tensile CuNiSi

Article-Nr.									
635.010.000	5 - 6.9	- 150	- 150	- 107	- 107			0.9	1

Technical Specifications: **Splice fitting SKF6-153**

Article No.	635.010.000
Starting torque	50 N·m
Contact wire section Cu	- 150 mm ²
Contact wire section CuMg 0.2	- 107 mm ²
Contact wire section CuMg 0.5	- 107 mm ²
Contact wire section CuAg	- 150 mm ²
Contact wire groove	5 - 6.9 mm
comment	1
Commercial specification	
Customs number	85359000
country of origin	CH
Texte	
comment	1
Logistic specification	
Kilo / piece	0.9 kg

