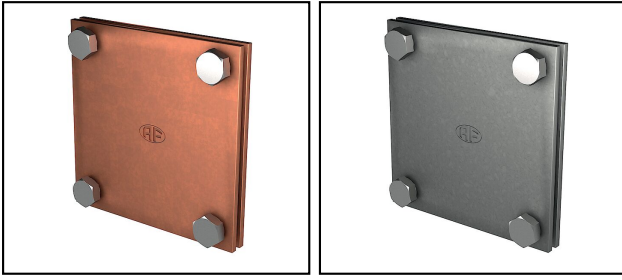

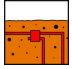
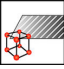





Conductor connections and junctions

■ RE 46 Cross and parallel connection



| Article-Nr. | E-Number |  |  |  |  |  | | | |  |
|-------------|-------------|---|---|---|---|---|--|--|--|---|
| 265.002.440 | 156 941 670 | H | | InoxA2 | M6x16 | 30x3 | | | | 10 |

Technical Specifications: **Cross and parallel connection RE 46**

| | |
|-----------------------------------|------------------------------|
| Article No. | 265.002.440 |
| Approved class H / N (EN 62561-1) | H |
| Material | InoxA2 |
| Screw | M6x16 |
| Band size | 30x3 |
| Type of connector | T-/cross-/parallel connector |
| Suitable for connection | Flat conductor FI 30 / FI 30 |
| Type of fastening screws | Hexagon screw |
| Surface protection | unbehandelt |
| required torque | 6 N·m |
| Commercial specification | |
| Customs number | 85389000 |
| country of origin | CE* |
| Logistic specification | |
| VPE Weight | 1.56 kg |

