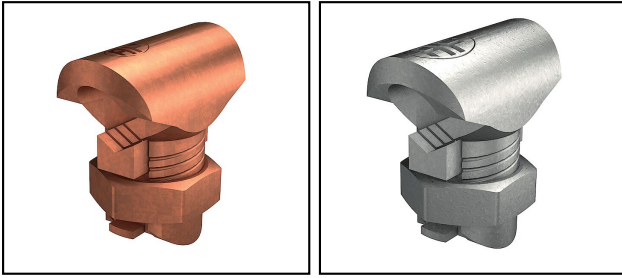


Conductor connections and junctions


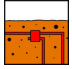
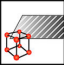
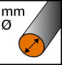
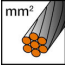


■ AV 5 Derivation clamp



Legend

Rough contact areas, high mechanical stability

a) With security strips

| Article-Nr. | E-Number |  |  |  |  |  | | |  |  |
|-------------|-------------|---|---|---|---|---|--|--|---|---|
| 125.164.604 | 156 216 070 | H | ok | CuvSn | 6 | | | | | 50 |

Technical Specifications: Derivation clamp AV 5

| | |
|---|-------------------------|
| Article No. | 125.164.604 |
| Approved class H / N (EN 62561-1) | H |
| Suitable for use in soil | ok |
| Material | CuvSn |
| Wire diameter | 6 mm |
| Nominal cross section branch conductor, SE/RE | 16 - 28 mm ² |
| Nominal cross section main conductor, SM | 28 mm ² |
| Clamping channel opening branch conductor | beidseitig offen |
| Type of connection | Screw connector |
| Material branch conductor | Kupfer |
| Clamping channel opening main conductor | beidseitig offen |
| Nominal cross section branch conductor, SM/RM | 16 - 28 mm ² |
| Material main conductor | Kupfer |
| Terminal insulated | No |
| Nominal cross section main conductor, SE | 28 mm ² |
| Surface protection | Tinned |
| Commercial specification | |
| Customs number | 85389000 |
| country of origin | CH |
| Logistic specification | |
| VPE Weight | 2.1 kg |

