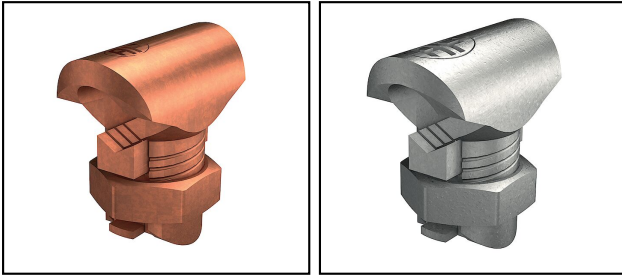


## Conductor connections and junctions


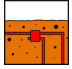
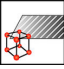
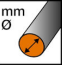
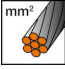


### ■ AV 5 Derivation clamp



#### Legend

Rough contact areas, high mechanical stability

a) With security strips

Article-Nr.	E-Number									
125.158.106	156 206 130		ok	Cu		150			a)	10

## Technical Specifications: Derivation clamp AV 5

Article No.	125.158.106
Suitable for use in soil	ok
Material	Cu
Nominal cross section conductor	150 mm <sup>2</sup>
Nominal cross section branch conductor, SE/RE	50 - 150 mm <sup>2</sup>
Nominal cross section main conductor, SM	150 mm <sup>2</sup>
Clamping channel opening branch conductor	beidseitig offen
Type of connection	Screw connector
Material branch conductor	Kupfer
Clamping channel opening main conductor	beidseitig offen
Nominal cross section branch conductor, SM/RM	50 - 150 mm <sup>2</sup>
Material main conductor	Kupfer
Terminal insulated	No
Nominal cross section main conductor, SE	150 mm <sup>2</sup>
comment	a)
Commercial specification	
Customs number	85389000
country of origin	CH
Texte	
comment	a)
Logistic specification	
VPE Weight	2.999 kg

