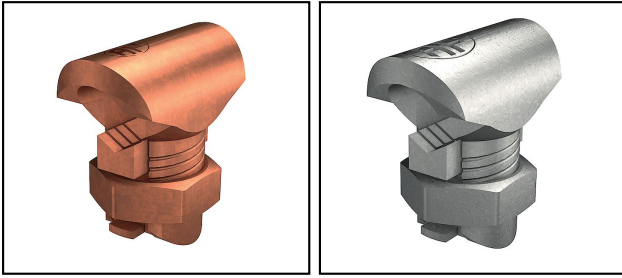


## Conductor connections and junctions


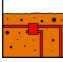
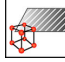
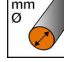
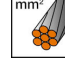


### ■ AV 5 Derivation clamp for conductor



#### Legend

Rough contact areas, high mechanical stability

a) With security strips

Article-Nr.	E-Number									
125.152.604	156 206 070	H	ok	Cu	6					50
125.153.605	156 206 080	H	ok	Cu	8	35				50
125.154.606	156 206 090	H	ok	Cu		50				50
125.155.103	156 206 100		ok	Cu		70		a)		25
125.156.104	156 206 110		ok	Cu		95		a)		25
125.157.105	156 206 120		ok	Cu		120		a)		10
125.158.106	156 206 130		ok	Cu		150		a)		10
125.164.604	156 216 070	H	ok	CuSn	6					50
125.165.605	156 216 080	H	ok	CuSn	8					50
125.166.606	156 216 090	H	ok	CuSn		50				50

## Technical Specifications: Derivation clamp for conductor AV 5

	125.152.604	125.153.605	125.154.606	125.155.103
Approved class H / N (EN 62561-1)	H			
Suitable for use in soil	ok			
Material	Cu			
Wire diameter	6 mm	8 mm		
Nominal cross section conductor		35 mm <sup>2</sup>	50 mm <sup>2</sup>	70 mm <sup>2</sup>
Nominal cross section branch conductor, SE/RE	16 - 28 mm <sup>2</sup>	16 - 35 mm <sup>2</sup>	25 - 50 mm <sup>2</sup>	25 - 70 mm <sup>2</sup>
Nominal cross section main conductor, SM	28 mm <sup>2</sup>	35 mm <sup>2</sup>	50 mm <sup>2</sup>	70 mm <sup>2</sup>
Clamping channel opening branch conductor	beidseitig offen			
Type of connection	Screw connector			
Material branch conductor	Kupfer			
Clamping channel opening main conductor	beidseitig offen			
Nominal cross section branch conductor, SM/RM	16 - 28 mm <sup>2</sup>	16 - 35 mm <sup>2</sup>	25 - 50 mm <sup>2</sup>	25 - 70 mm <sup>2</sup>
Material main conductor	Kupfer			
Terminal insulated	No			
Nominal cross section main conductor, SE	28 mm <sup>2</sup>	35 mm <sup>2</sup>	50 mm <sup>2</sup>	70 mm <sup>2</sup>
Surface protection	blank			
required torque	15 N·m		20 N·m	
Commercial specification				
Customs number	85389000			
country of origin	CH			
Logistic specification				
VPE Weight	2.1 kg	3 kg	3.88 kg	2.675 kg

	125.156.104	125.157.105	125.158.106	125.164.604
Approved class H / N (EN 62561-1)				H
Suitable for use in soil	ok			
Material	Cu			CuVSn
Wire diameter				6 mm
Nominal cross section conductor	95 mm <sup>2</sup>	120 mm <sup>2</sup>	150 mm <sup>2</sup>	
Nominal cross section branch conductor, SE/RE	50 - 95 mm <sup>2</sup>	50 - 120 mm <sup>2</sup>	50 - 150 mm <sup>2</sup>	16 - 28 mm <sup>2</sup>
Nominal cross section main conductor, SM	95 mm <sup>2</sup>	120 mm <sup>2</sup>	150 mm <sup>2</sup>	28 mm <sup>2</sup>
Clamping channel opening branch conductor	beidseitig offen			
Type of connection	Screw connector			
Material branch conductor	Kupfer			
Clamping channel opening main conductor	beidseitig offen			
Nominal cross section branch conductor, SM/RM	50 - 95 mm <sup>2</sup>	50 - 120 mm <sup>2</sup>	50 - 150 mm <sup>2</sup>	16 - 28 mm <sup>2</sup>
Material main conductor	Kupfer			
Terminal insulated	No			
Nominal cross section main conductor, SE	95 mm <sup>2</sup>	120 mm <sup>2</sup>	150 mm <sup>2</sup>	28 mm <sup>2</sup>
Surface protection	Tinned			
required torque				
Commercial specification				
Customs number	85389000			
country of origin	CH			
Logistic specification				
VPE Weight	4.126 kg	2.153 kg	2.999 kg	2.1 kg



	125.165.605	125.166.606
Approved class H / N (EN 62561-1)	H	
Suitable for use in soil	ok	
Material	CuvSn	
Wire diameter	8 mm	
Nominal cross section conductor		50 mm <sup>2</sup>
Nominal cross section branch conductor, SE/RE	16 - 35 mm <sup>2</sup>	25 - 50 mm <sup>2</sup>
Nominal cross section main conductor, SM	35 mm <sup>2</sup>	50 mm <sup>2</sup>
Clamping channel opening branch conductor	beidseitig offen	
Type of connection	Screw connector	
Material branch conductor	Kupfer	
Clamping channel opening main conductor	beidseitig offen	
Nominal cross section branch conductor, SM/RM	16 - 35 mm <sup>2</sup>	25 - 50 mm <sup>2</sup>
Material main conductor	Kupfer	
Terminal insulated	No	
Nominal cross section main conductor, SE	35 mm <sup>2</sup>	50 mm <sup>2</sup>
Surface protection	Tinned	
required torque		
Commercial specification		
Customs number	85389000	
country of origin	CH	
Logistic specification		
VPE Weight	3 kg	3.873 kg

