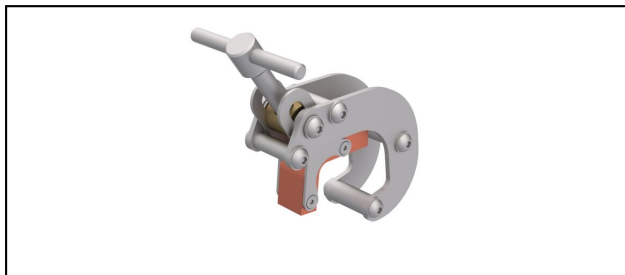


## Rail clamps

### ■ DS225 Diagonal rail clamp



#### Application

Adjustable to rails UIC 54E to UIC 60

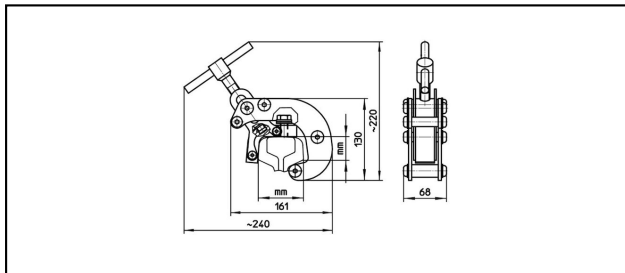
#### Characteristics

Earthing Cable up to 95 mm<sup>2</sup>

Connection bolt M12

#### Material

Clamp stainless steel. Contact CuNiSi



Article-Nr.	mm	kA   ms $I_k$							Kg
640.060.000	65 - 85	40/300							2.1

Technical Specifications: **Diagonal rail clamp DS225**

	640.060.000
<b>Clamping range</b>	65 - 85 mm
<b>Short circuit current</b>	40/300 kA/ms
Commercial specification	
<b>Customs number</b>	85359000
<b>country of origin</b>	CH
Logistic specification	
<b>Kilo / piece</b>	2.1 kg

