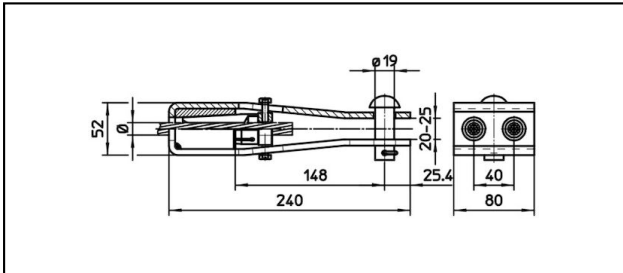
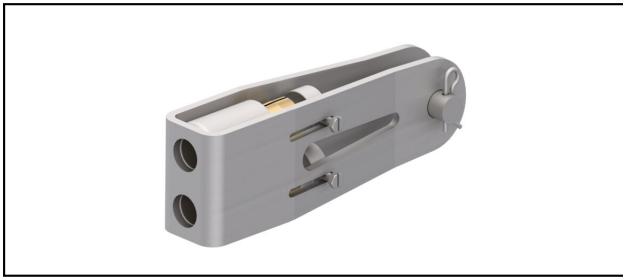


## Double forked collar sockets

### ■ DGL240 Double forked collar sockets



#### Application

For 2 Cu or Bz tensioned cables

#### Characteristics

Service load min. 2 x 3 kN / max. 2 x 25 kN

Breaking load of corpus min. 120 kN


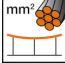
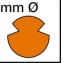



#### Material

Corpus stainless steel / Collet AlBz

#### Legend

1) Rail product name: +335 MCM

2) Contact wire diameter: +17.50

Article-Nr.									
610.099.000	4/0 AWG+335 MCM	1x	12.25+17.50	107				1.49	1,2

Technical Specifications: **Double forked collar sockets DGL240**

Article No.	610.099.000
<b>Rail product name</b>	4/0 AWG+335 MCM
<b>Catenary wire section</b>	1x
<b>Contact wire diameter</b>	12.25+17.50
<b>Contact wire section</b>	107 mm <sup>2</sup>
<b>comment</b>	1,2
Commercial specification	
<b>Customs number</b>	85359000
<b>country of origin</b>	CH
Texte	
<b>comment</b>	1,2
Logistic specification	
<b>Kilo / piece</b>	1.49 kg

