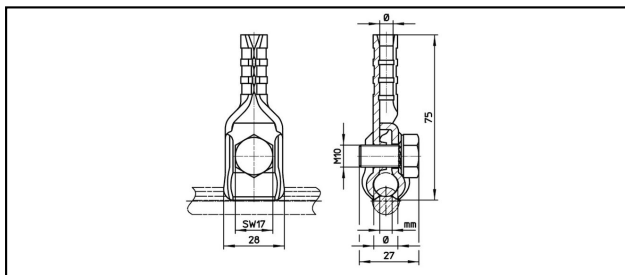


Cable dropper clamps

SKTF4



Application

For droppers, current feeding

Characteristics



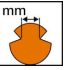

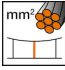


KZ = Key number of hexagonal pressing tool
Torque 20-25 Nm

Material

Corpus CuNiSi

Legend

- 1) With sleeve of distance
- 2) KZ 11
- 3) KZ 13
- 4) Torque 20 - 40 Nm
- 5) KZ 12

| Article-Nr. |  |  |  |  |  | | |  |  |
|-------------|---|---|---|---|---|--|--|---|---|
| 625.024.000 | 6.5 - 12.6 | 25 - 95 | 3 - 8.5 | 7.5 | 25 | | | 0.11 | 3 |
| 625.030.000 | 6.5 - 12.6 | 25 - 95 | 3 - 8.5 | 4.5 | 10 | | | 0.1 | 2 |
| 625.509.000 | 10.5 - 12.6 | 65 - 95 | 6 - 7 | 6 | 16 | | | 0.115 | 1, 4, 5 |
| 625.021.000 | 6.5 - 12.6 | 25 - 95 | 3 - 8.5 | 6 | 16 | | | 0.11 | 5 |
| 625.032.000 | 12.6 - 14 | 95 - 120 | 5.6 - 8.5 | 4.5 | 10 | | | 0.12 | 2 |
| 625.033.000 | 12.6 - 14 | 95 - 120 | 5.6 - 8.5 | 6 | 16 | | | 0.12 | 5 |

Technical Specifications: **SKTF4**

| | 625.024.000 | 625.030.000 | 625.509.000 | 625.021.000 |
|---------------------------------|-------------------------|--------------------|-------------------------|-------------------------|
| Catenary wire diameter | 6.5 - 12.6 mm | | 10.5 - 12.6 mm | 6.5 - 12.6 mm |
| Catenary wire section | 25 - 95 mm ² | | 65 - 95 mm ² | 25 - 95 mm ² |
| Contact wire groove | 3 - 8.5 mm | | 6 - 7 mm | 3 - 8.5 mm |
| Dropper wire diameter | 7.5 mm | 4.5 mm | 6 mm | |
| Dropper wire section | 25 mm ² | 10 mm ² | 16 mm ² | |
| | 20 - 25 N·m | | | |
| Commercial specification | | | | |
| Customs number | 85359000 | | | |
| country of origin | CH | | | |
| Logistic specification | | | | |
| Kilo / piece | 0.11 kg | 0.1 kg | 0.115 kg | 0.11 kg |

| | 625.032.000 | 625.033.000 |
|---------------------------------|--------------------------|--------------------|
| Catenary wire diameter | 12.6 - 14 mm | |
| Catenary wire section | 95 - 120 mm ² | |
| Contact wire groove | 5.6 - 8.5 mm | |
| Dropper wire diameter | 4.5 mm | 6 mm |
| Dropper wire section | 10 mm ² | 16 mm ² |
| | 20 - 25 N·m | |
| Commercial specification | | |
| Customs number | 85359000 | |
| country of origin | CH | |
| Logistic specification | | |
| Kilo / piece | 0.12 kg | |

