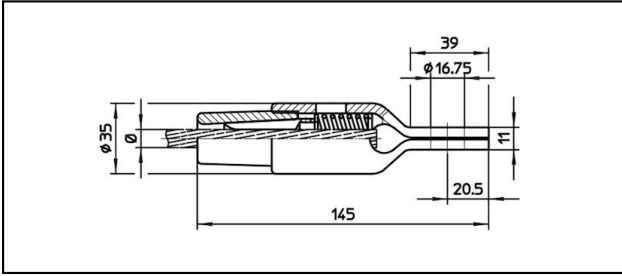
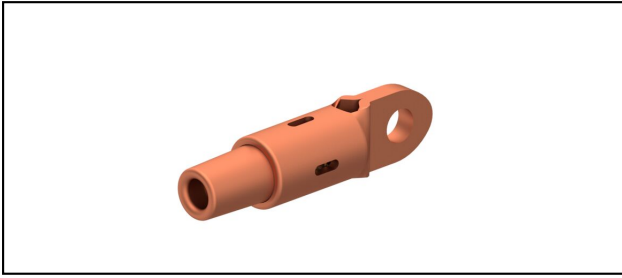


Eyelet collar sockets CuNiSi

OCK145

**Application**

Cu, Cu-steel or Bz tensioned cables



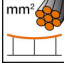
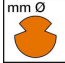


Characteristics

Service load min. 3 kN / max. 25 kN

Breaking load of corpus min. 80 kN

Material

Corpus CuNiSi / Collet AIBz

Article-Nr.										
615.150.041	D5	4.9	5							0.55
615.151.002	D6	5.9	6							0.55
615.152.027	D8	7.9	8							0.54
615.156.102	S50	8.9	50							0.54
615.153.103	FD70			9.8	70					0.54
615.154.150	FD85			10.8	85					0.53
615.157.103	S70	10.8	70							0.54
615.155.151	FD100			12.8	100					0.53
615.158.104	S95	12.8	95							0.53

Technical Specifications: **OCK145**

	615.150.041	615.151.002	615.152.027	615.156.102
Rail product name	D5	D6	D8	S50
Catenary wire diameter	4.9 mm	5.9 mm	7.9 mm	8.9 mm
Catenary wire section	5 mm ²	6 mm ²	8 mm ²	50 mm ²
Contact wire diameter				
Contact wire section				
Commercial specification				
Customs number	0	85359000		
country of origin	undefined	CH		
Logistic specification				
Kilo / piece	0.55 kg		0.54 kg	

	615.153.103	615.154.150	615.157.103	615.155.151
Rail product name	FD70	FD85	S70	FD100
Catenary wire diameter			10.8 mm	
Catenary wire section			70 mm ²	
Contact wire diameter	9.8 mm	10.8 mm		12.8 mm
Contact wire section	70 mm ²	85 mm ²		100 mm ²
Commercial specification				
Customs number	0	85359000		
country of origin	undefined	CH		
Logistic specification				
Kilo / piece	0.54 kg	0.53 kg	0.54 kg	0.53 kg

	615.158.104
Rail product name	S95
Catenary wire diameter	12.8 mm
Catenary wire section	95 mm ²
Contact wire diameter	
Contact wire section	
Commercial specification	
Customs number	85359000
country of origin	CH
Logistic specification	
Kilo / piece	0.53 kg

