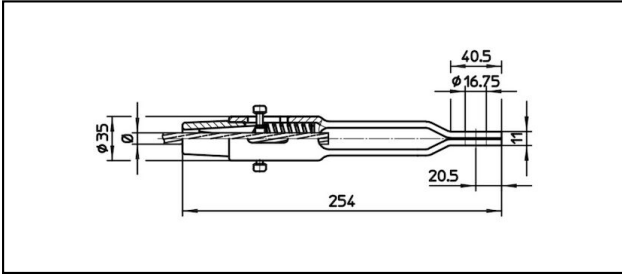
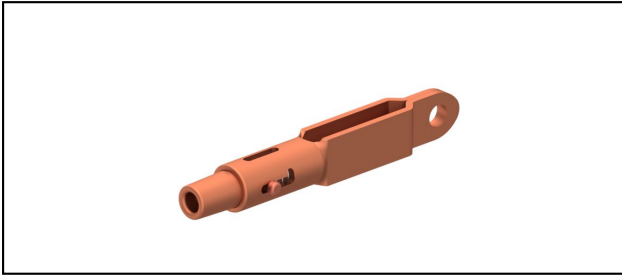


Eyelet collar sockets CuNiSi

■ OCL254

**Application**

Cu, Cu-steel or Bz tensioned cables

Characteristics

Service load min. 3 kN / max. 25 kN

Breaking load of corpus min. 80 kN

Material

Corpus CuNiSi / Collet AIBz

Article-Nr.	«N»	mm Ø	mm ²						Kg
615.225.000	D6	5.9	6						0.9
615.235.000	S35	7.5	35						0.91
615.193.102	S50	8.9	50						0.91
615.229.000	S70	10.8	70						0.91
615.194.104	S100	12	100						0.9

Technical Specifications: **OCL254**

	615.225.000	615.235.000	615.193.102	615.229.000
Rail product name	D6	S35	S50	S70
Catenary wire diameter	5.9 mm	7.5 mm	8.9 mm	10.8 mm
Catenary wire section	6 mm ²	35 mm ²	50 mm ²	70 mm ²
Commercial specification				
Customs number	85359000			
country of origin	CH	ZA*	CH	
Logistic specification				
Kilo / piece	0.9 kg	0.91 kg		

	615.194.104
Rail product name	S100
Catenary wire diameter	12 mm
Catenary wire section	100 mm ²
Commercial specification	
Customs number	85359000
country of origin	CH
Logistic specification	
Kilo / piece	0.9 kg

