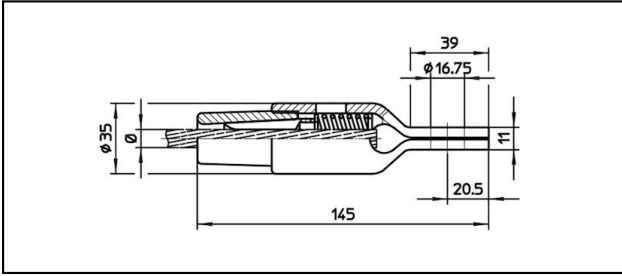
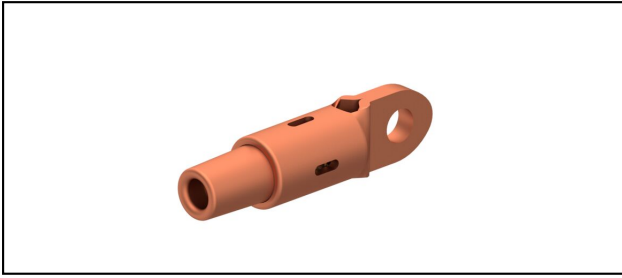


Eyelet collar sockets CuNiSi

■ OCK145 Eyelet collar socket



Application

Cu, Cu-steel or Bz tensioned cables







Characteristics

Service load min. 3 kN / max. 25 kN

Breaking load of corpus min. 80 kN

Material

Corpus CuNiSi / Collet AIBz

Article-Nr.									
615.150.041	D5	4.9	5						0.55

Technical Specifications: **Eyelet collar socket OCK145**

Article No.	615.150.041
Rail product name	D5
Catenary wire diameter	4.9 mm
Catenary wire section	5 mm ²
Commercial specification	
Customs number	0
country of origin	undefined
Logistic specification	
Kilo / piece	0.55 kg

