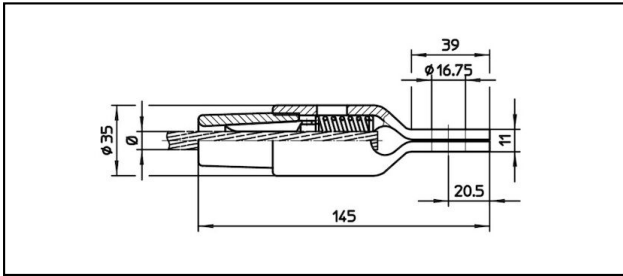
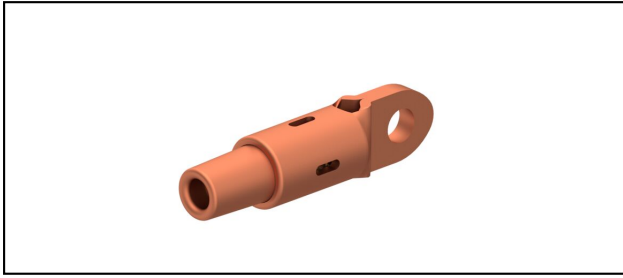


Eyelet collar sockets CuNiSi

■ **OCK145** Eyelet collar socket**Application**

Cu, Cu-steel or Bz tensioned cables


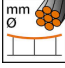
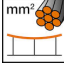
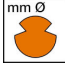


Characteristics

Service load min. 3 kN / max. 25 kN

Breaking load of corpus min. 80 kN

Material

Corpus CuNiSi / Collet AIBz

Article-Nr.									
615.151.002	D6	5.9	6						0.55

Technical Specifications: **Eyelet collar socket OCK145**

Article No.	615.151.002
Rail product name	D6
Catenary wire diameter	5.9 mm
Catenary wire section	6 mm ²
Commercial specification	
Customs number	85359000
country of origin	CH
Logistic specification	
Kilo / piece	0.55 kg

