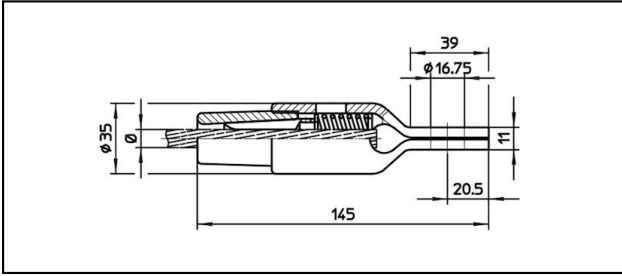
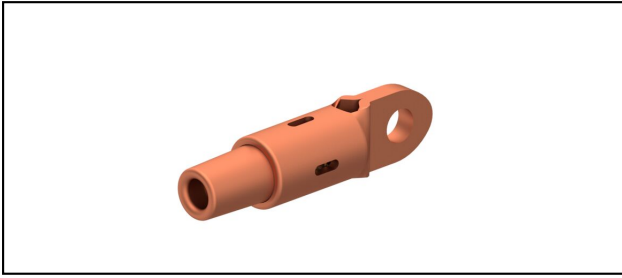


## Eyelet collar sockets CuNiSi

■ **OCK145** Eyelet collar socket**Application**

Cu, Cu-steel or Bz tensioned cables


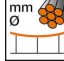
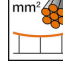



**Characteristics**

Service load min. 3 kN / max. 25 kN

Breaking load of corpus min. 80 kN

**Material**

Corpus CuNiSi / Collet AIBz

Article-Nr.										
615.157.103	S70	10.8	70							0.54

Technical Specifications: **Eyelet collar socket OCK145**

Article No.	615.157.103
<b>Rail product name</b>	S70
<b>Catenary wire diameter</b>	10.8 mm
<b>Catenary wire section</b>	70 mm <sup>2</sup>
Commercial specification	
<b>Customs number</b>	85359000
<b>country of origin</b>	CH
Logistic specification	
<b>Kilo / piece</b>	0.54 kg

