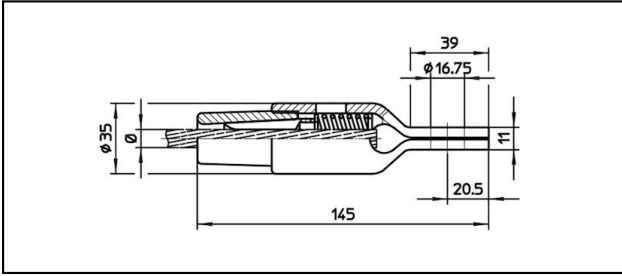
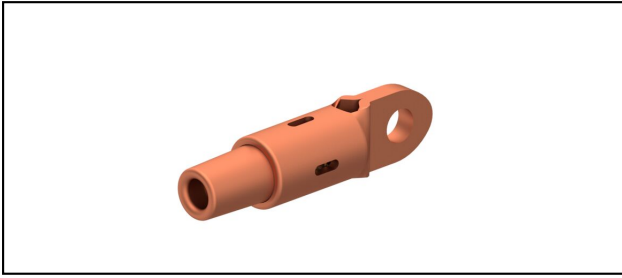


## Eyelet collar sockets CuNiSi

### ■ OCK145 Eyelet collar socket



#### Application

Cu, Cu-steel or Bz tensioned cables


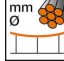
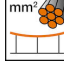



#### Characteristics

Service load min. 3 kN / max. 25 kN

Breaking load of corpus min. 80 kN

#### Material

Corpus CuNiSi / Collet AIBz

Article-Nr.									
615.155.151	FD100			12.8	100				0.53

Technical Specifications: **Eyelet collar socket OCK145**

Article No.	615.155.151
<b>Rail product name</b>	FD100
<b>Contact wire diameter</b>	12.8 mm
<b>Contact wire section</b>	100 mm <sup>2</sup>
Commercial specification	
<b>Customs number</b>	85359000
<b>country of origin</b>	CH
Logistic specification	
<b>Kilo / piece</b>	0.53 kg

