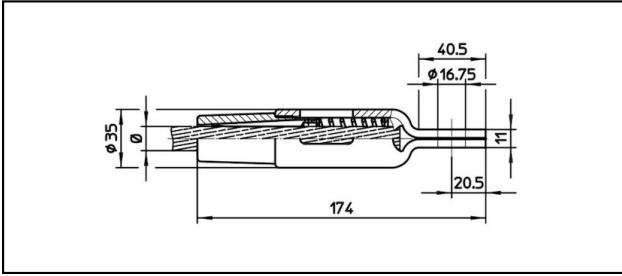
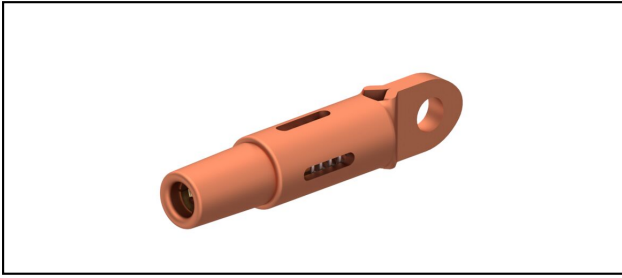


Eyelet collar sockets CuNiSi

■ OCK174 Eyelet collar socket



Application

Cu, Cu-steel or Bz tensioned cables


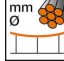
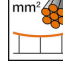



Characteristics

Service load min. 3 kN / max. 25 kN

Breaking load of corpus min. 80 kN

Material

Corpus CuNiSi / Collet AIBz

Article-Nr.										
615.160.105	S120	14	120							0.64

Technical Specifications: **Eyelet collar socket OCK174**

Article No.	615.160.105
Rail product name	S120
Catenary wire diameter	14 mm
Catenary wire section	120 mm ²
Commercial specification	
Customs number	85359000
country of origin	CH
Logistic specification	
Kilo / piece	0.64 kg

