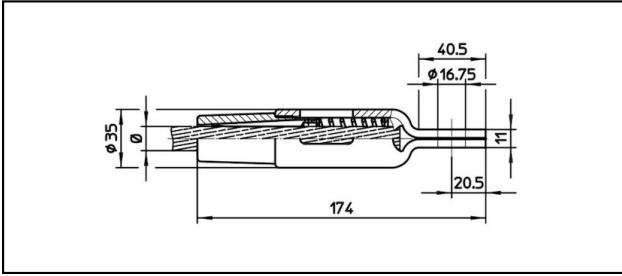
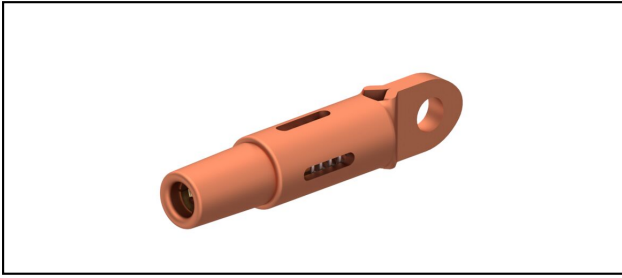


## Eyelet collar sockets CuNiSi

### ■ OCK174 Eyelet collar socket



#### Application

Cu, Cu-steel or Bz tensioned cables







#### Characteristics

Service load min. 3 kN / max. 25 kN

Breaking load of corpus min. 80 kN

#### Material

Corpus CuNiSi / Collet AIBz

Article-Nr.										
615.161.106	S150	15.8	150							0.62

Technical Specifications: **Eyelet collar socket OCK174**

Article No.	615.161.106
<b>Rail product name</b>	S150
<b>Catenary wire diameter</b>	15.8 mm
<b>Catenary wire section</b>	150 mm <sup>2</sup>
Commercial specification	
<b>Customs number</b>	85359000
<b>country of origin</b>	CH
Logistic specification	
<b>Kilo / piece</b>	0.62 kg

