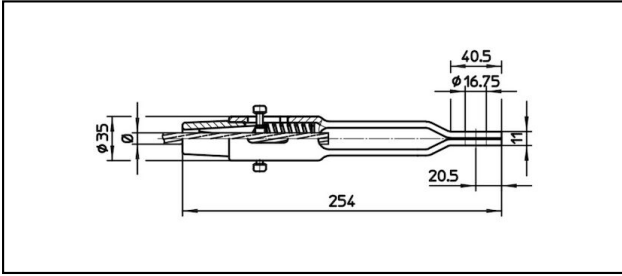
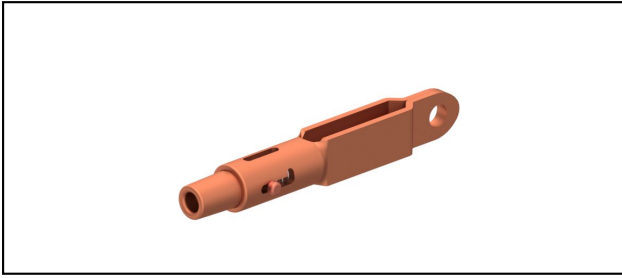


Eyelet collar sockets CuNiSi

■ OCL254 Eyelet collar socket



Application

Cu, Cu-steel or Bz tensioned cables



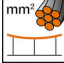
Characteristics

Service load min. 3 kN / max. 25 kN

Breaking load of corpus min. 80 kN

Material

Corpus CuNiSi / Collet AIBz

Article-Nr.									
615.225.000	D6	5.9	6						0.9

Technical Specifications: **Eyelet collar socket OCL254**

Article No.	615.225.000
Rail product name	D6
Catenary wire diameter	5.9 mm
Catenary wire section	6 mm ²
Commercial specification	
Customs number	85359000
country of origin	CH
Logistic specification	
Kilo / piece	0.9 kg

