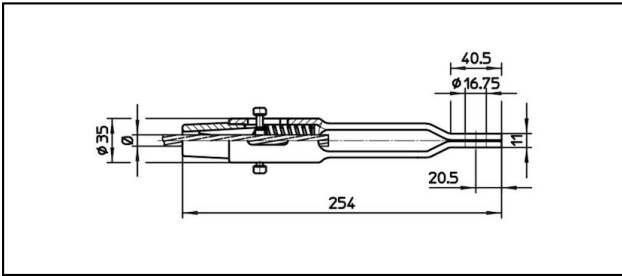
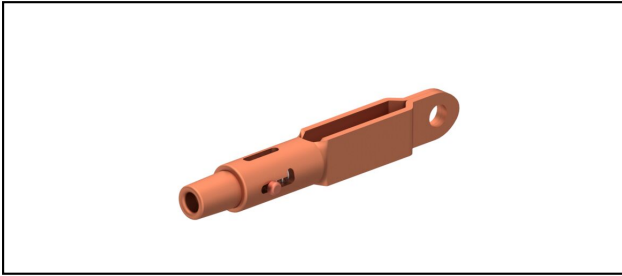


Eyelet collar sockets CuNiSi

■ OCL254 Eyelet collar socket



Application

Cu, Cu-steel or Bz tensioned cables

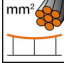

Characteristics

Service load min. 3 kN / max. 25 kN

Breaking load of corpus min. 80 kN

Material

Corpus CuNiSi / Collet AIBz

Article-Nr.									
615.229.000	S70	10.8	70						0.91

Technical Specifications: **Eyelet collar socket OCL254**

Article No.	615.229.000
Rail product name	S70
Catenary wire diameter	10.8 mm
Catenary wire section	70 mm ²
Commercial specification	
Customs number	85359000
country of origin	CH
Logistic specification	
Kilo / piece	0.91 kg

