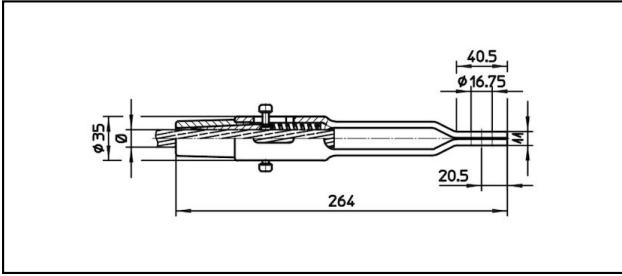
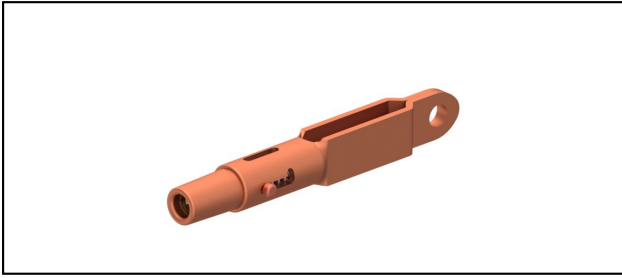


## Eyelet collar sockets CuNiSi

### ■ OCL264 Eyelet collar socket



#### Application

Cu, Cu-steel or Bz tensioned cables




#### Characteristics

Service load min. 3 kN / max. 25 kN

Breaking load of corpus min. 80 kN

#### Material

Corpus CuNiSi / Collet AIBz

Article-Nr.										
615.195.105	S120	14	120							0.95

Technical Specifications: **Eyelet collar socket OCL264**

Article No.	615.195.105
<b>Rail product name</b>	S120
<b>Catenary wire diameter</b>	14 mm
<b>Catenary wire section</b>	120 mm <sup>2</sup>
Commercial specification	
<b>Customs number</b>	85359000
<b>country of origin</b>	CH
Logistic specification	
<b>Kilo / piece</b>	0.95 kg

