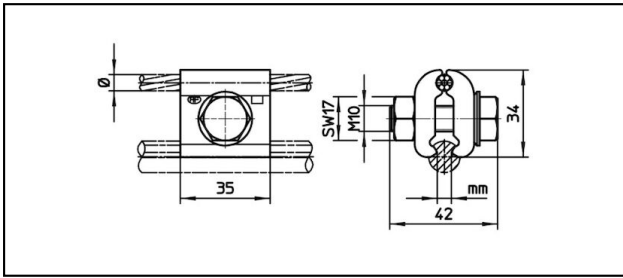


### Various clamps

■ **FK1-35** Fixpoint clamp



**Application**


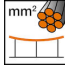
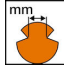


For copper or copper alloy contact wire and fix point wire

**Characteristics**

Torque 50 Nm

**Material**

Clamping plates CuNiSi

Article-Nr.									
635.136.156	6	35	5 - 6.9	70 - 150					0.205

Technical Specifications: **Fixpoint clamp FK1-35**

Article No.	635.136.156
Contact wire section	70 - 150 mm <sup>2</sup>
Catenary wire diameter	6 mm
Catenary wire section	35 mm <sup>2</sup>
Starting torque	50 N·m
Contact wire groove	5 - 6.9 mm
Commercial specification	
Customs number	85359000
country of origin	CH
Logistic specification	
Kilo / piece	0.205 kg

