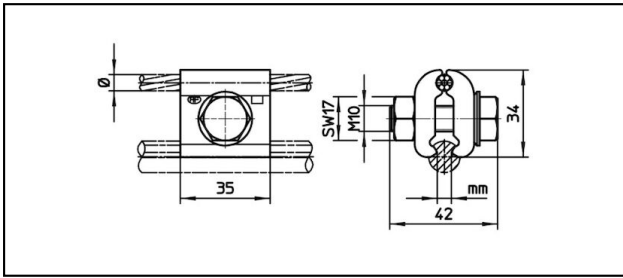


Various clamps

■ **FK1-35** Fixpoint clamp



**Application**


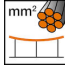
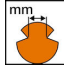


For copper or copper alloy contact wire and fix point wire

**Characteristics**

Torque 50 Nm

**Material**

Clamping plates CuNiSi

| Article-Nr. |  |  |  |  |  |  |  |  |  |
|-------------|---|---|---|---|--|--|--|--|---|
| 635.359.000 | 9 - 9.5   | 70  | 5 - 6.9   |   |  |  |  |  | 0.2   |

Technical Specifications: **Fixpoint clamp FK1-35**

|                          |                    |
|--------------------------|--------------------|
| Article No.              | 635.359.000        |
| Catenary wire diameter   | 9 - 9.5 mm         |
| Catenary wire section    | 70 mm <sup>2</sup> |
| Starting torque          | 50 N·m             |
| Contact wire groove      | 5 - 6.9 mm         |
| Commercial specification |                    |
| Customs number           | 85359000           |
| country of origin        | CH                 |
| Logistic specification   |                    |
| Kilo / piece             | 0.2 kg             |

