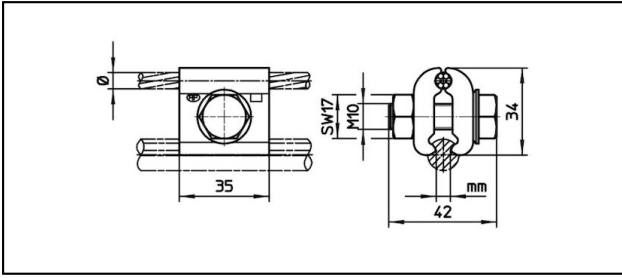


Various clamps

■ **FK1-35** Fixpoint clamp



Application






For copper or copper alloy contact wire and fix point wire

Characteristics

Torque 50 Nm

Material

Clamping plates CuNiSi

Article-Nr.									
635.136.156	6	35	5 - 6.9	70 - 150					0.205
635.359.000	9 - 9.5	70	5 - 6.9						0.2

Technical Specifications: **Fixpoint clamp FK1-35**

	635.136.156	635.359.000
Contact wire section	70 - 150 mm ²	
Catenary wire diameter	6 mm	9 - 9.5 mm
Catenary wire section	35 mm ²	70 mm ²
Starting torque	50 N·m	
Contact wire groove	5 - 6.9 mm	
Commercial specification		
Customs number	85359000	
country of origin	CH	
Logistic specification		
Kilo / piece	0.205 kg	0.2 kg

