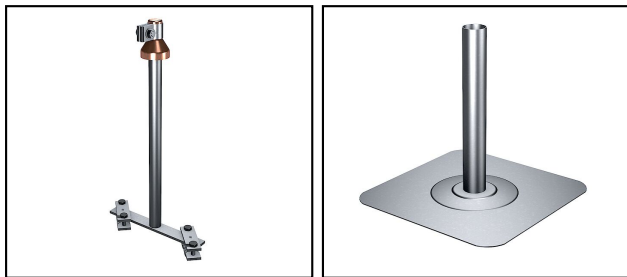


Interception components

■ FL 76b Flat roof lead through components


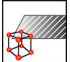

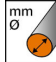
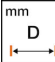




Characteristics

For blankets of bituminous, mastic concrete or synthetic material

Legend

- a) Contact tube with capping, contact straps, 2 cross clamps FE 43
- b) Tablet (340x340mm) with welded tube
- c) Hat with connecting clamp
- d) Connecting clamp

| Article-Nr. | E-Number |  |  |  |  |  | | |  |  |
|-------------|-------------|---|---|---|---|---|--|--|---|---|
| 220.018.728 | 156 941 440 | H | InoxA2 | 900 | 6 - 9 | 27 | | | a) | 2 |
| 220.018.729 | 156 941 430 | | InoxA2 | 480 | | 33 | | | b) | 2 |
| 220.018.730 | 156 941 420 | H | Cu | | 6 - 9 | | | | c) | 1 |
| 220.018.731 | 156 941 480 | H | InoxA2 | | 6 - 9 | | | | d) | 1 |

Technical Specifications: **Flat roof lead through components FL 76b**

| | | | | |
|--|------------------------------------|-------------|-------------|-------------|
| | 220.018.728 | 220.018.729 | 220.018.730 | 220.018.731 |
| Approved class H / N (EN 62561-1) | H | | H | |
| Material | InoxA2 | | Cu | InoxA2 |
| Height H | 900 mm | 480 mm | | |
| Wire diameter | 6 - 9 mm | | | |
| Type of accessory | Dach-, Wand- und Erderdurchführung | | | |
| Surface protection | unbehandelt | | | |
| Diameter D | 27 mm | 33 mm | | |
| Commercial specification | | | | |
| Customs number | 85389000 | | | |
| country of origin | CH | | | |
| Logistic specification | | | | |
| VPE Weight | 4.94 kg | 4.494 kg | | |

