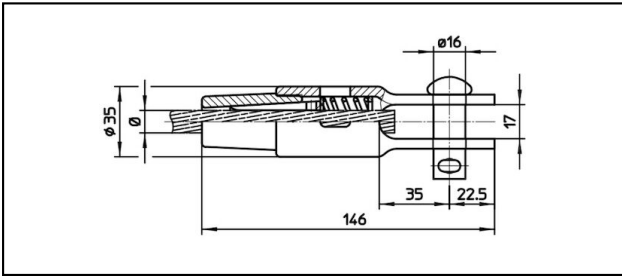
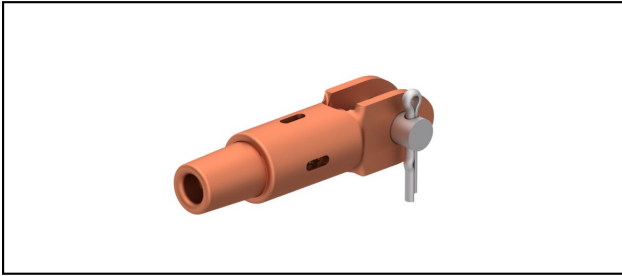


## Forked collar sockets

## ■ GCK146/17

**Application**

Cu, Cu-steel or Bz tensioned cables



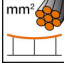
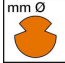


**Characteristics**

Service load min. 3 kN / max. 25 kN

Breaking load of corpus min. 80 kN

**Material**

Corpus CuNiSi / Collet AIBz resp. CuNiSi

Article-Nr.										
615.030.041	D5	4.9	5							0.62
615.031.002	D6	5.9	6							0.62
615.032.027	D8	7.9	8							0.61
615.036.102	S50	8.9	50							0.61
615.033.103	FD70			9.6	70					0.61
615.034.150	S70-FD85	10.8	70	10.8	85					0.61
615.046.150	S85	11.8	85							0.6
615.035.151	FD107			12.8	107					0.6
615.038.104	S95	12.8	95							0.6

Technical Specifications: **GCK146/17**

	615.030.041	615.031.002	615.032.027	615.036.102
<b>Rail product name</b>	D5	D6	D8	S50
<b>Catenary wire diameter</b>	4.9 mm	5.9 mm	7.9 mm	8.9 mm
<b>Catenary wire section</b>	5 mm <sup>2</sup>	6 mm <sup>2</sup>	8 mm <sup>2</sup>	50 mm <sup>2</sup>
<b>Contact wire diameter</b>				
<b>Contact wire section</b>				
Commercial specification				
<b>Customs number</b>	85359000			
<b>country of origin</b>	undefined	CH		
Logistic specification				
<b>Kilo / piece</b>	0.62 kg		0.61 kg	

	615.033.103	615.034.150	615.046.150	615.035.151
<b>Rail product name</b>	FD70	S70-FD85	S85	FD107
<b>Catenary wire diameter</b>		10.8 mm	11.8 mm	
<b>Catenary wire section</b>		70 mm <sup>2</sup>	85 mm <sup>2</sup>	
<b>Contact wire diameter</b>	9.6 mm	10.8 mm		12.8 mm
<b>Contact wire section</b>	70 mm <sup>2</sup>	85 mm <sup>2</sup>		107 mm <sup>2</sup>
Commercial specification				
<b>Customs number</b>	85359000			
<b>country of origin</b>	CH			
Logistic specification				
<b>Kilo / piece</b>	0.61 kg		0.6 kg	

	615.038.104
<b>Rail product name</b>	S95
<b>Catenary wire diameter</b>	12.8 mm
<b>Catenary wire section</b>	95 mm <sup>2</sup>
<b>Contact wire diameter</b>	
<b>Contact wire section</b>	
Commercial specification	
<b>Customs number</b>	85359000
<b>country of origin</b>	CH
Logistic specification	
<b>Kilo / piece</b>	0.6 kg

