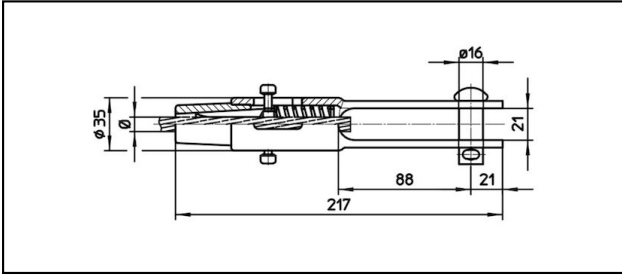
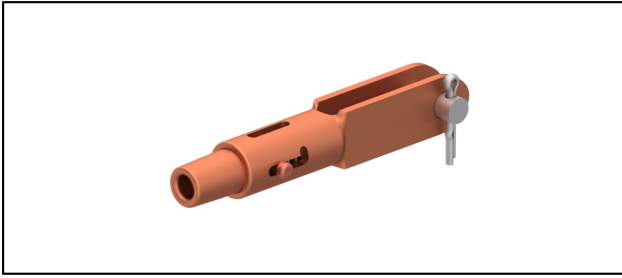


Forked collar sockets

■ GCL217/21

**Application**

Cu, Cu-steel or Bz tensioned cables


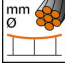
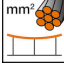

Characteristics

Service load min. 3 kN / max. 25 kN

Breaking load of corpus min. 80 kN

Material

Corpus CuNiSi / Collet AIBz

Article-Nr.									
615.111.161	S65	9.5	65						0.86
615.100.103	S70	10.8	70						0.86

Technical Specifications: **GCL217/21**

	615.111.161	615.100.103
Rail product name	S65	S70
Catenary wire diameter	9.5 mm	10.8 mm
Catenary wire section	65 mm ²	70 mm ²
Commercial specification		
Customs number	85359000	
country of origin	CH	
Logistic specification		
Kilo / piece	0.86 kg	

