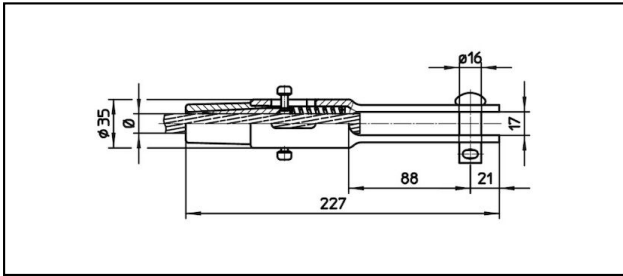
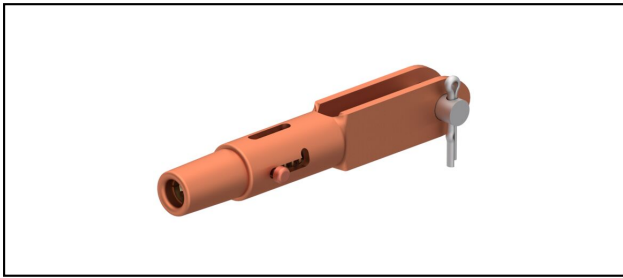


Forked collar sockets

■ GCL227/17

**Application**

Cu, Cu-steel or Bz tensioned cables


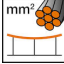
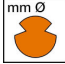


Characteristics

Service load min. 3 kN / max. 25 kN

Breaking load of corpus min. 80 kN

Material

Corpus CuNiSi / Collet AIBz

Article-Nr.									
615.107.105	FD120			12.9	120				0.91
615.105.105	FD120			13.2	120				0.91
615.095.105	S120	14	120						0.91
615.096.106	S150/FD180	15.8	150	15.8	180				0.89

Technical Specifications: **GCL227/17**

	615.107.105	615.105.105	615.095.105	615.096.106
Rail product name	FD120		S120	S150/FD180
Catenary wire diameter			14 mm	15.8 mm
Catenary wire section			120 mm ²	150 mm ²
Contact wire diameter	12.9 mm	13.2 mm		15.8 mm
Contact wire section	120 mm ²			180 mm ²
Commercial specification				
Customs number	85359000			
country of origin	CH			
Logistic specification				
Kilo / piece	0.91 kg			0.89 kg

