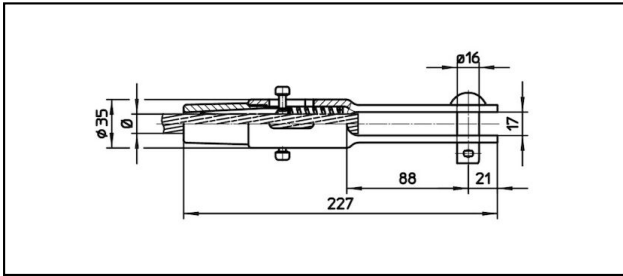
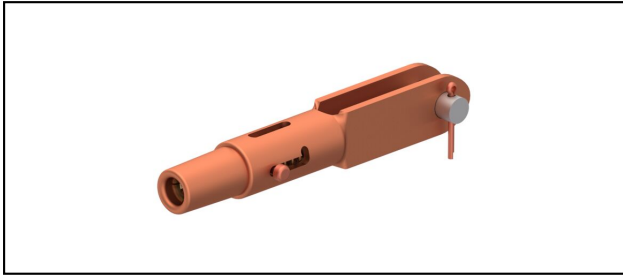


Forked collar sockets

■ GCL227/17 Spc.

**Application**

Cu, Cu-steel or Bz tensioned cables

Characteristics


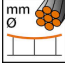
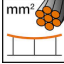
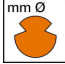


With Cu-Cotter pin

Service load min. 3 kN / max. 25 kN

Breaking load of corpus min. 80 kN

Material

Corpus CuNiSi / Collet AIBz

Article-Nr.									
615.199.105	S120	14	120						0.91
615.201.106	FD150			14.5	150				0.9

Technical Specifications: **GCL227/17 Spc.**

	615.199.105	615.201.106
Rail product name	S120	FD150
Catenary wire diameter	14 mm	
Catenary wire section	120 mm ²	
Contact wire diameter		14.5 mm
Contact wire section		150 mm ²
Commercial specification		
Customs number	85359000	
country of origin	CH	
Logistic specification		
Kilo / piece	0.91 kg	0.9 kg

