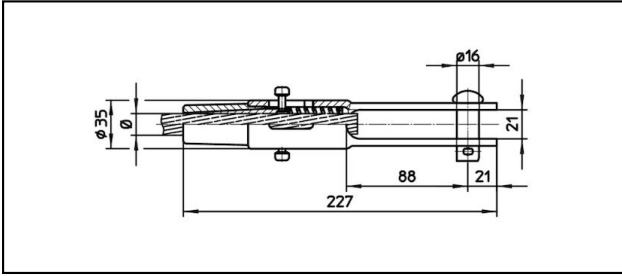
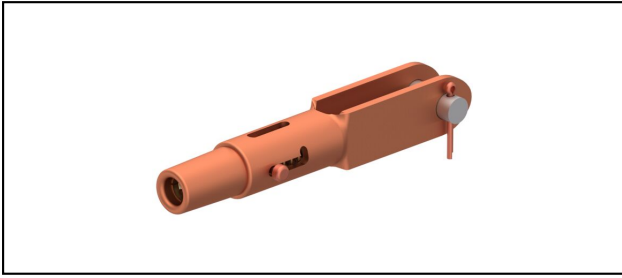


## Forked collar sockets

## ■ GCL227/21 Spc.

**Application**

Cu, Cu-steel or Bz tensioned cables

**Characteristics**



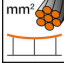
With Cu-Cotter pin

Service load min. 3 kN / max. 25 kN

Breaking load of corpus min. 80 kN

**Material**

Corpus CuNiSi / Collet AlBz resp. CuNiSi

Article-Nr.									
615.119.106	S150	15.8	150						0.89

Technical Specifications: **GCL227/21 Spc.**

	615.119.106
<b>Rail product name</b>	S150
<b>Catenary wire diameter</b>	15.8 mm
<b>Catenary wire section</b>	150 mm <sup>2</sup>
Commercial specification	
<b>Customs number</b>	85359000
<b>country of origin</b>	CH
Logistic specification	
<b>Kilo / piece</b>	0.89 kg

