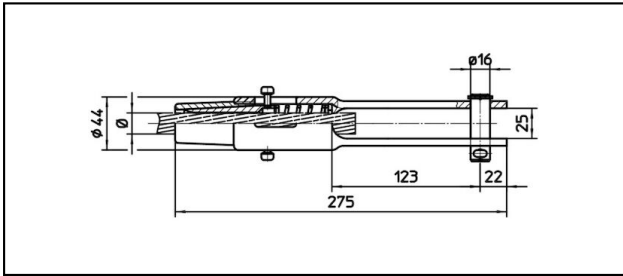
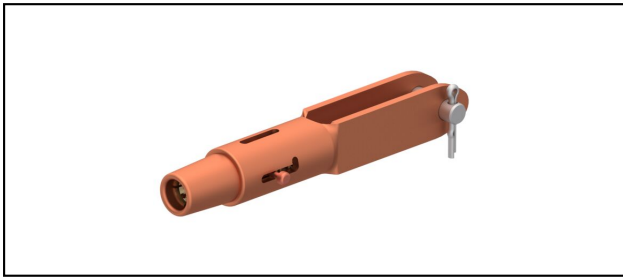


Forked collar sockets

■ GCL275/25

**Application**

Cu, Cu-steel or Bz tensioned cables

Characteristics

Service load min. 3 kN / max. 25 kN

Breaking load of corpus min. 80 kN

Material

Corpus CuNiSi / Collet AIBz

| Article-Nr. | «N» | mm ϕ | mm ² | | | | | | Kg |
|-------------|------|--------------|-----------------|--|--|--|--|--|------|
| 615.108.111 | S180 | 17.5 | 180 | | | | | | 1.55 |
| 615.208.000 | S143 | 15.8 | 143 | | | | | | 1.55 |
| 615.112.171 | S160 | 16.8 | 160 | | | | | | 1.55 |
| 615.129.000 | S240 | 19.8 | 240 | | | | | | 1.55 |

Technical Specifications: **GCL275/25**

| | 615.108.111 | 615.208.000 | 615.112.171 | 615.129.000 |
|---------------------------------|---------------------|---------------------|---------------------|---------------------|
| Rail product name | S180 | S143 | S160 | S240 |
| Catenary wire diameter | 17.5 mm | 15.8 mm | 16.8 mm | 19.8 mm |
| Catenary wire section | 180 mm ² | 143 mm ² | 160 mm ² | 240 mm ² |
| Commercial specification | | | | |
| Customs number | 85359000 | | | |
| country of origin | CH | | | |
| Logistic specification | | | | |
| Kilo / piece | 1.55 kg | | | |

