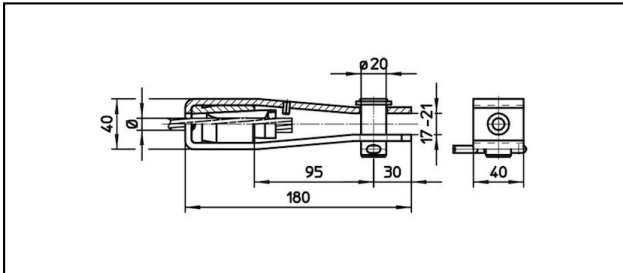


Forked collar sockets

■ GI40/40,B20

**Application**

Cu, Cu-steel, steel or Bz tensioned cables

Characteristics

Breaking load of corpus min. 60 kN

Material

Corpus stainless steel / Collet AlBz

Legend

1) With colour code

Article-Nr.	«N»	mm Ø	mm²	mm Ø	mm²			Kg	
610.077.001	S24	6.3	24					0.9	1
610.008.001	S50	9.8	50					0.9	
610.075.001	S70	10.8	70					0.9	1
610.083.000	S70	10.8	70					0.9	1
610.076.001	S72	11.3	72					0.9	1
610.068.001	S120	14	120					0.9	1
610.100.000	S120	14	120					0.9	
610.074.001	S128	15	128					0.9	1
610.071.001	FD107			12.4	107			0.9	1
610.088.000	FD120			12.9	120			0.9	
610.078.001	FD120			13.8	120			0.9	1
610.080.001	FD150			15	150			0.9	1

Technical Specifications: **GI40/40,B20**

	610.077.001	610.008.001	610.075.001	610.083.000
Rail product name	S24	S50	S70	
Catenary wire diameter	6.3 mm	9.8 mm	10.8 mm	
Catenary wire section	24 mm ²	50 mm ²	70 mm ²	
Contact wire diameter				
Contact wire section				
Commercial specification				
Customs number	85359000			
country of origin	CH			
Logistic specification				
Kilo / piece	0.9 kg			

	610.076.001	610.068.001	610.100.000	610.074.001
Rail product name	S72	S120	S128	
Catenary wire diameter	11.3 mm	14 mm	15 mm	
Catenary wire section	72 mm ²	120 mm ²	128 mm ²	
Contact wire diameter				
Contact wire section				
Commercial specification				
Customs number	85359000			
country of origin	CH		undefined	CH
Logistic specification				
Kilo / piece	0.9 kg			

	610.071.001	610.088.000	610.078.001	610.080.001
Rail product name	FD107	FD120		FD150
Catenary wire diameter				
Catenary wire section				
Contact wire diameter	12.4 mm	12.9 mm	13.8 mm	15 mm
Contact wire section	107 mm ²	120 mm ²		150 mm ²
Commercial specification				
Customs number	85359000			
country of origin	CH			
Logistic specification				
Kilo / piece	0.9 kg			

