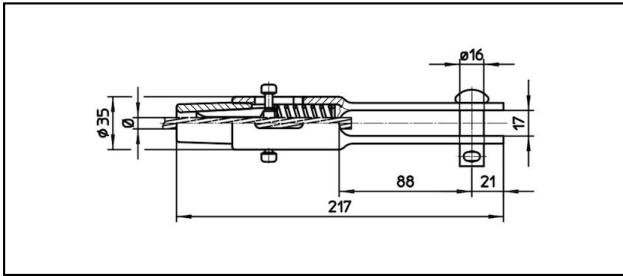
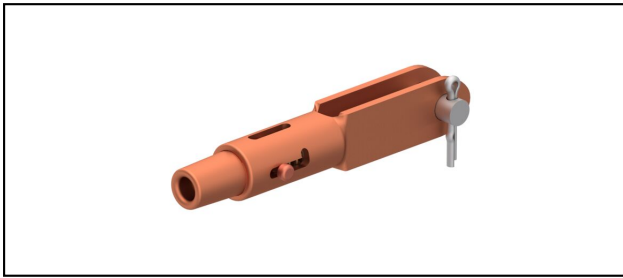


## Forked collar sockets

### ■ GCL217/17 Forked collar socket



#### Application

Cu, Cu-steel, steel or Bz tensioned cables

#### Characteristics

Service load min. 3 kN / max. 25 kN

Breaking load of corpus min. 80 kN



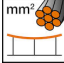
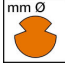



#### Material

Corpus CuNiSi / Collet AIBz resp. CuNiSi

#### Legend

1) Collet of stainless steel for steel cables

2) Without bolt  $\varnothing$  16mm (bore  $\varnothing$  16.75mm)

Article-Nr.									
615.084.110	S35	7.5	35					0.86	

Technical Specifications: **Forked collar socket GCL217/17**

Article No.	615.084.110
<b>Rail product name</b>	S35
<b>Catenary wire diameter</b>	7.5 mm
<b>Catenary wire section</b>	35 mm <sup>2</sup>
Commercial specification	
<b>Customs number</b>	85359000
<b>country of origin</b>	CH
Logistic specification	
<b>Kilo / piece</b>	0.86 kg

