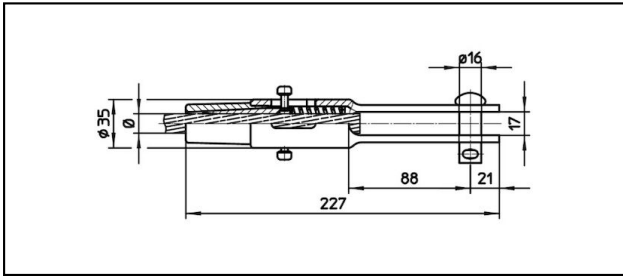
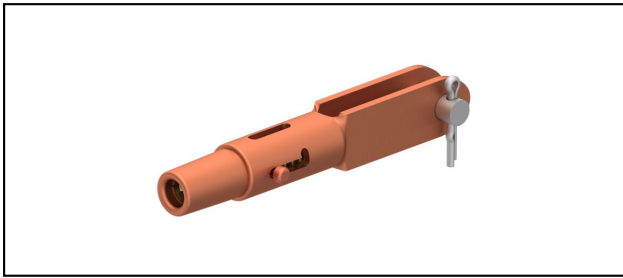


Forked collar sockets

■ GCL227/17 Forked collar socket



Application

Cu, Cu-steel or Bz tensioned cables







Characteristics

Service load min. 3 kN / max. 25 kN

Breaking load of corpus min. 80 kN

Material

Corpus CuNiSi / Collet AIBz

Article-Nr.									
615.096.106	S150/FD180	15.8	150	15.8	180				0.89

Technical Specifications: **Forked collar socket GCL227/17**

Article No.	615.096.106
Rail product name	S150/FD180
Catenary wire diameter	15.8 mm
Catenary wire section	150 mm ²
Contact wire diameter	15.8 mm
Contact wire section	180 mm ²
Commercial specification	
Customs number	85359000
country of origin	CH
Logistic specification	
Kilo / piece	0.89 kg

