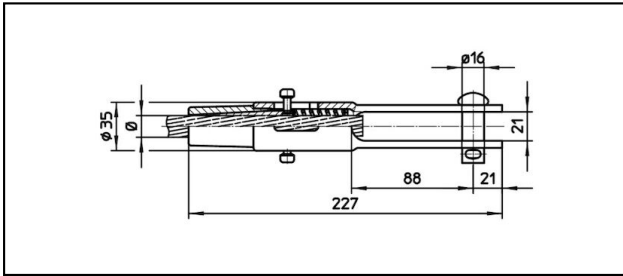
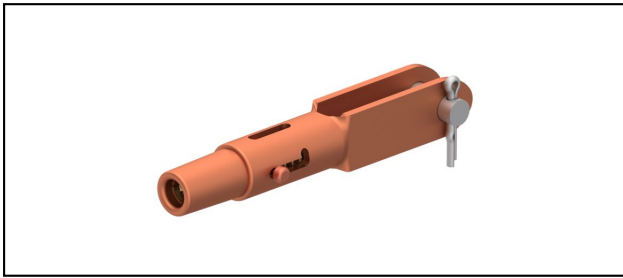


## Forked collar sockets

■ **GCL227/21** Forked collar socket**Application**

Cu, Cu-steel or Bz tensioned cables


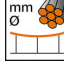
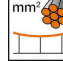



**Characteristics**

Service load min. 3 kN / max. 25 kN

Breaking load of corpus min. 80 kN

**Material**

Corpus CuNiSi / Collet AIBz

Article-Nr.									
615.109.105	S120	14	120						0.91

Technical Specifications: **Forked collar socket GCL227/21**

Article No.	615.109.105
<b>Rail product name</b>	S120
<b>Catenary wire diameter</b>	14 mm
<b>Catenary wire section</b>	120 mm <sup>2</sup>
Commercial specification	
<b>Customs number</b>	85359000
<b>country of origin</b>	CH
Logistic specification	
<b>Kilo / piece</b>	0.91 kg

