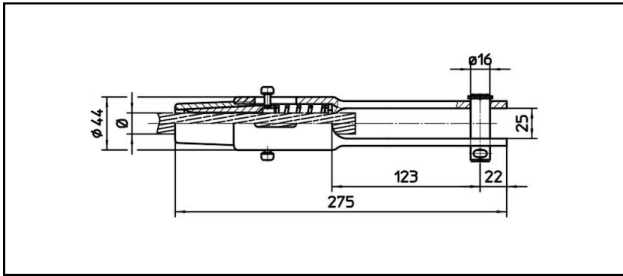
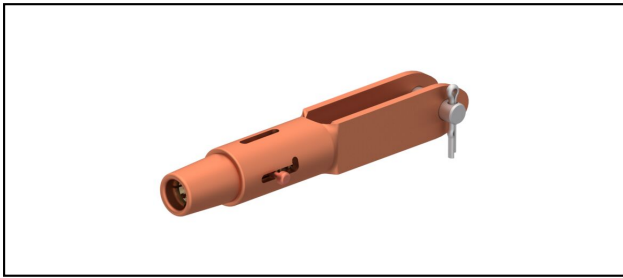


## Forked collar sockets

### ■ GCL275/25 Forked collar socket



#### Application

Cu, Cu-steel or Bz tensioned cables



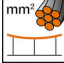

#### Characteristics

Service load min. 3 kN / max. 25 kN

Breaking load of corpus min. 80 kN

#### Material

Corpus CuNiSi / Collet AIBz

Article-Nr.									
615.129.000	S240	19.8	240						1.55

Technical Specifications: **Forked collar socket GCL275/25**

Article No.	615.129.000
<b>Rail product name</b>	S240
<b>Catenary wire diameter</b>	19.8 mm
<b>Catenary wire section</b>	240 mm <sup>2</sup>
Commercial specification	
<b>Customs number</b>	85359000
<b>country of origin</b>	CH
Logistic specification	
<b>Kilo / piece</b>	1.55 kg

