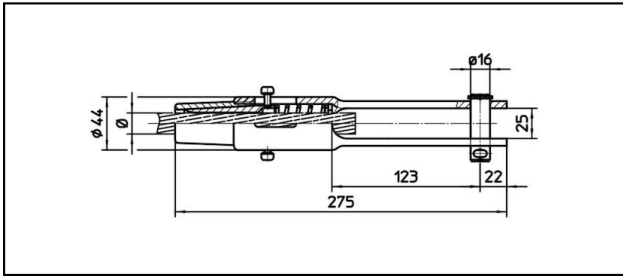
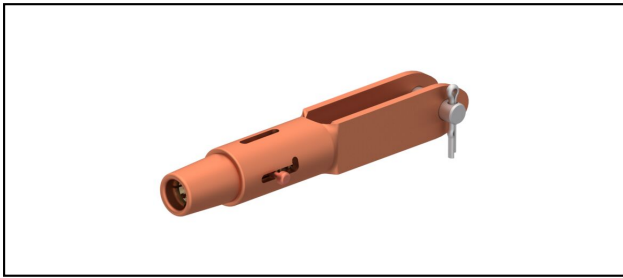


Forked collar sockets

■ GCL275/25 Forked collar socket



Application

Cu, Cu-steel or Bz tensioned cables



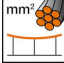
Characteristics

Service load min. 3 kN / max. 25 kN

Breaking load of corpus min. 80 kN

Material

Corpus CuNiSi / Collet AIBz

Article-Nr.									
615.208.000	S143	15.8	143						1.55

Technical Specifications: **Forked collar socket GCL275/25**

Article No.	615.208.000
Rail product name	S143
Catenary wire diameter	15.8 mm
Catenary wire section	143 mm ²
Commercial specification	
Customs number	85359000
country of origin	CH
Logistic specification	
Kilo / piece	1.55 kg

