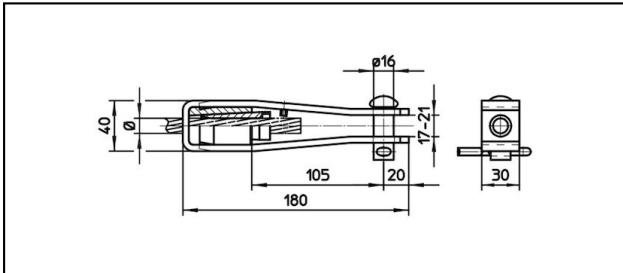
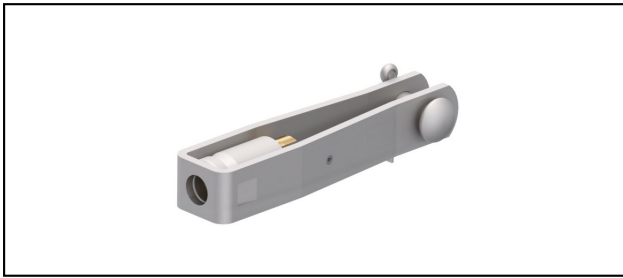


Forked collar sockets

■ GI40/30,B16 Forked collar socket



Application

Cu, Cu-steel, Steel or Bz tensioned cables

Characteristics

Service load min. 3 kN / max. 25 kN

Breaking load of corpus min. 60 kN



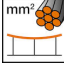
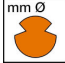



Material

Corpus stainless steel / Collet AlBz resp. stainless steel

Legend

1) Collet of stainless steel for steel cables

2) With colour code

Article-Nr.									
610.009.160	S80 + 104	11.8	80					0.82	

Technical Specifications: **Forked collar socket GI40/30,B16**

Article No.	610.009.160
Rail product name	S80 + 104
Catenary wire diameter	11.8 mm
Catenary wire section	80 mm ²
Commercial specification	
Customs number	85359000
country of origin	CH
Logistic specification	
Kilo / piece	0.82 kg

