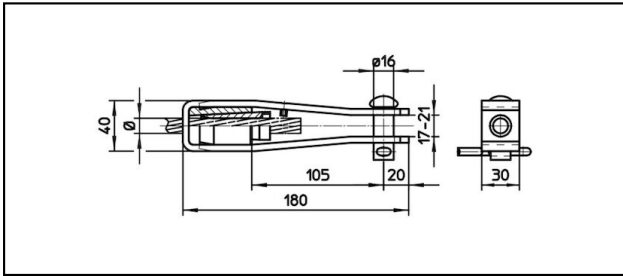
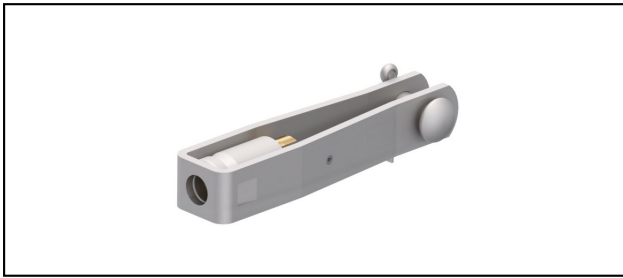


## Forked collar sockets

### ■ GI40/30,B16 Forked collar socket



#### Application

Cu, Cu-steel, Steel or Bz tensioned cables

#### Characteristics

Service load min. 3 kN / max. 25 kN

Breaking load of corpus min. 60 kN


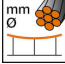
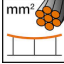
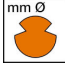



#### Material

Corpus stainless steel / Collet AlBz resp. stainless steel

#### Legend

1) Collet of stainless steel for steel cables

2) With colour code

Article-Nr.									
610.045.000	S95/FD100-1 10	12.9	95	12.9	100 - 110			0.82	

Technical Specifications: **Forked collar socket GI40/30,B16**

Article No.	610.045.000
<b>Rail product name</b>	S95/FD100-110
<b>Catenary wire diameter</b>	12.9 mm
<b>Catenary wire section</b>	95 mm <sup>2</sup>
<b>Contact wire diameter</b>	12.9 mm
<b>Contact wire section</b>	100 - 110 mm <sup>2</sup>
Commercial specification	
<b>Customs number</b>	85359000
<b>country of origin</b>	CH
Logistic specification	
<b>Kilo / piece</b>	0.82 kg

