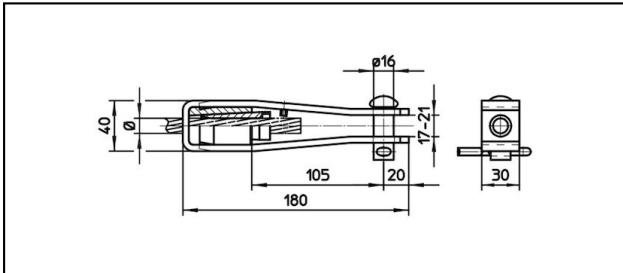
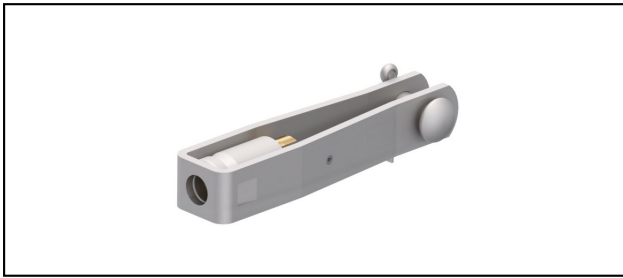


Forked collar sockets

■ GI40/30,B16 Forked collar socket



Application

Cu, Cu-steel, Steel or Bz tensioned cables

Characteristics

Service load min. 3 kN / max. 25 kN

Breaking load of corpus min. 60 kN



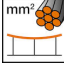
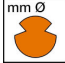



Material

Corpus stainless steel / Collet AlBz resp. stainless steel

Legend

1) Collet of stainless steel for steel cables

2) With colour code

Article-Nr.									
610.054.000	S D 6 Inox	6.3						0.82	1

Technical Specifications: **Forked collar socket GI40/30,B16**

Article No.	610.054.000
Rail product name	S D 6 Inox
Catenary wire diameter	6.3 mm
comment	1
Commercial specification	
Customs number	85359000
country of origin	CH
Texte	
comment	1
Logistic specification	
Kilo / piece	0.82 kg

