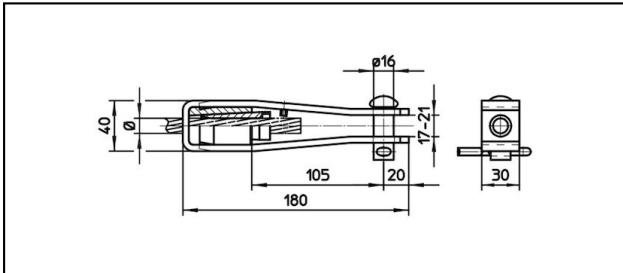
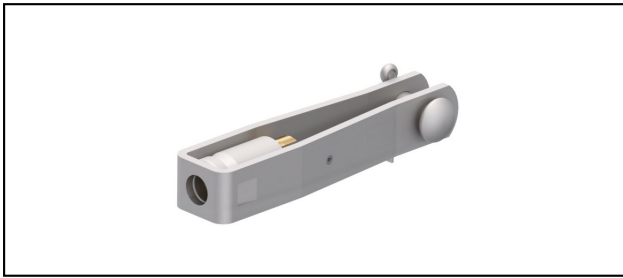


## Forked collar sockets

### ■ GI40/30,B16 Forked collar socket



#### Application

Cu, Cu-steel, Steel or Bz tensioned cables

#### Characteristics

Service load min. 3 kN / max. 25 kN

Breaking load of corpus min. 60 kN



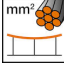
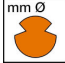



#### Material

Corpus stainless steel / Collet AlBz resp. stainless steel

#### Legend

1) Collet of stainless steel for steel cables

2) With colour code

Article-Nr.									
610.031.176	S60 St	10.5	60					0.82	1

Technical Specifications: **Forked collar socket GI40/30,B16**

Article No.	610.031.176
<b>Rail product name</b>	S60 St
<b>Catenary wire diameter</b>	10.5 mm
<b>Catenary wire section</b>	60 mm <sup>2</sup>
<b>comment</b>	1
Commercial specification	
<b>Customs number</b>	85359020
<b>country of origin</b>	CH
Texte	
<b>comment</b>	1
Logistic specification	
<b>Kilo / piece</b>	0.82 kg

