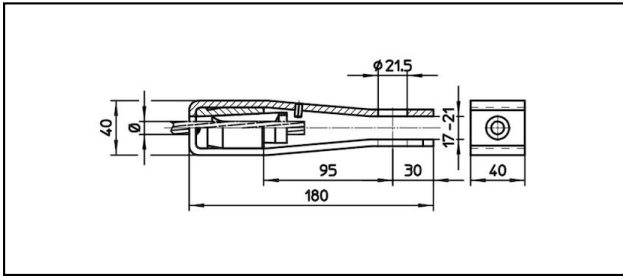
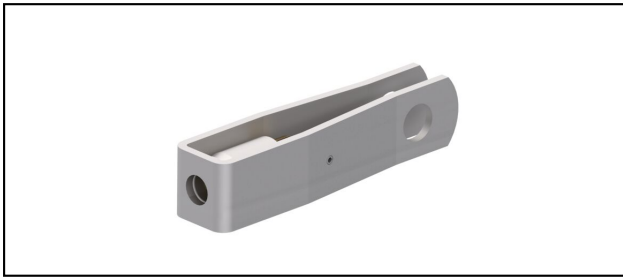


Forked collar sockets

■ GI40/40,21.5 Forked collar socket



Application

Cu, Cu-steel, steel or Bz tensioned cables

Characteristics

Service load min. 3 kN / max. 25 kN

Breaking load of corpus min. 60 kN



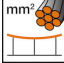
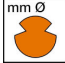



Material

Corpus stainless steel / Collet AlBz resp. stainless steel

Legend

1) Collet of stainless steel for steel cables

2) With colour code

Article-Nr.									
610.077.000	S24	6.3	24					0.75	2

Technical Specifications: Forked collar socket GI40/40,21.5

Article No.	610.077.000
Rail product name	S24
Catenary wire diameter	6.3 mm
Catenary wire section	24 mm ²
comment	2
Commercial specification	
Customs number	85359000
country of origin	CH
Texte	
comment	2
Logistic specification	
Kilo / piece	0.75 kg

