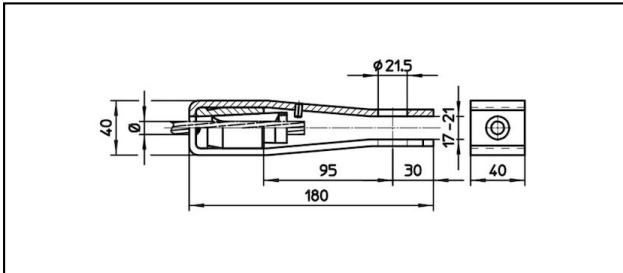
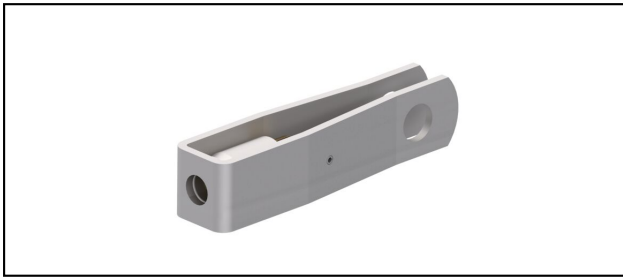


Forked collar sockets

■ GI40/40,21.5 Forked collar socket



Application

Cu, Cu-steel, steel or Bz tensioned cables

Characteristics

Service load min. 3 kN / max. 25 kN

Breaking load of corpus min. 60 kN



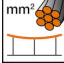
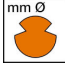



Material

Corpus stainless steel / Collet AlBz resp. stainless steel

Legend

1) Collet of stainless steel for steel cables

2) With colour code

| Article-Nr. |  |  |  |  |  | | |  |  |
|-------------|---|---|---|---|---|--|--|---|---|
| 610.080.000 | FD150 | | | 15 | 150 | | | 0.75 | 2 |

Technical Specifications: **Forked collar socket GI40/40,21.5**

| | |
|------------------------------|---------------------|
| Article No. | 610.080.000 |
| Rail product name | FD150 |
| Contact wire diameter | 15 mm |
| Contact wire section | 150 mm ² |
| comment | 2 |
| Commercial specification | |
| Customs number | 85359000 |
| country of origin | CH |
| Texte | |
| comment | 2 |
| Logistic specification | |
| Kilo / piece | 0.75 kg |

