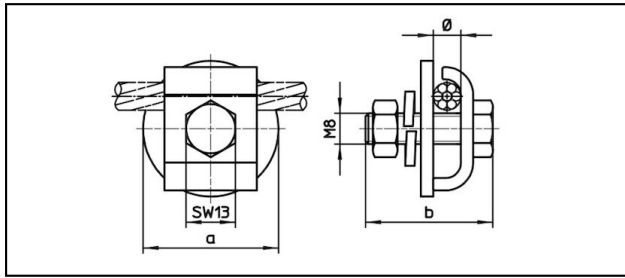


### Various clamps

■ **EB** Ground cable support








**Application**  
For earthing wire

**Characteristics**  
Bolt M8 SW13  
Torque 25 Nm

**Material**  
Clamping plates CuNiSi

**Legend**  
1) M10 / SW 17  
2) Without hexagon nut and MS snap ring

Article-Nr.									
635.101.023	9	44	45.5					0.11	2

Technical Specifications: **Ground cable support EB**

Article No.	635.101.023
<b>Length a</b>	44 mm
<b>Width b</b>	45.5 mm
<b>Catenary wire diameter</b>	9 mm
<b>Starting torque</b>	25 N·m
<b>comment</b>	2
Commercial specification	
<b>Customs number</b>	0
<b>country of origin</b>	undefined
Texte	
<b>comment</b>	2
Logistic specification	
<b>Kilo / piece</b>	0.11 kg

