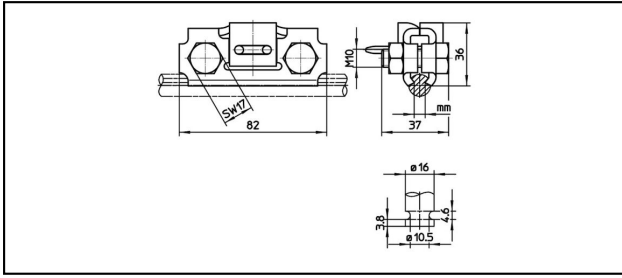


Guide arm clamps

■ SHK82 Guide arm clamp



Application

Steady arm with pivot

Characteristics

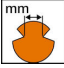



Torque 30 Nm

Material

Clamping plates CuNiSi

Legend

1) Nut 1D

Article-Nr.									
635.163.000	5 - 8.5	80 - 193						0.278	1

Technical Specifications: **Guide arm clamp SHK82**

Article No.	635.163.000
Starting torque	30 N·m
Contact wire groove	5 - 8.5 mm
Contact wire section	80 - 193 mm ²
comment	1
Commercial specification	
Customs number	0
country of origin	ZA*
Texte	
comment	1
Logistic specification	
Kilo / piece	0.278 kg

