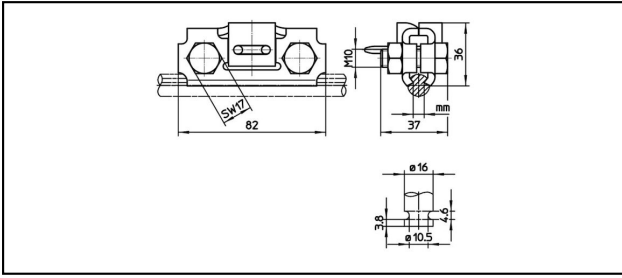


Guide arm clamps

■ SHK82 Guide arm clamp

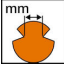





**Application**  
Steady arm with pivot

**Characteristics**  
Torque 30 Nm

**Material**  
Clamping plates CuNiSi

**Legend**  
1) Nut 1D

Article-Nr.									
635.058.000	5 - 8.5	80 - 193						0.278	

Technical Specifications: **Guide arm clamp SHK82**

Article No.	635.058.000
<b>Starting torque</b>	30 N·m
<b>Contact wire groove</b>	5 - 8.5 mm
<b>Contact wire section</b>	80 - 193 mm <sup>2</sup>
Commercial specification	
<b>Customs number</b>	85359000
<b>country of origin</b>	CH
Logistic specification	
<b>Kilo / piece</b>	0.278 kg

