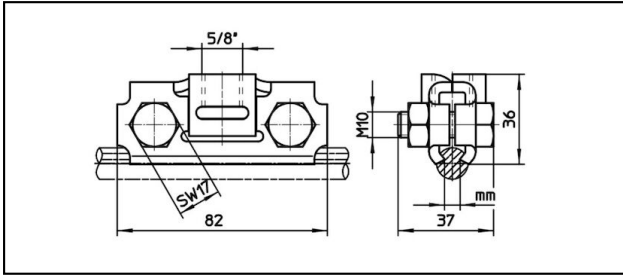


Guide arm clamps

■ **SHK82-A** Guide arm clamp

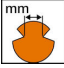





Application
Steady arm with streaded stem

Characteristics
Torque 30 Nm

Material
Clamping plates CuNiSi

Legend
1) Screw nut 1 D

Article-Nr.									
635.164.000	5 - 8.5	80 - 193						0.27	1

Technical Specifications: **Guide arm clamp SHK82-A**

Article No.	635.164.000
Starting torque	30 N·m
Contact wire groove	5 - 8.5 mm
Contact wire section	80 - 193 mm ²
comment	1
Commercial specification	
Customs number	0
country of origin	undefined
Texte	
comment	1
Logistic specification	
Kilo / piece	0.27 kg

