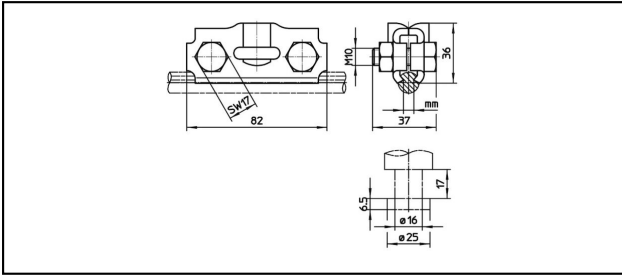


Guide arm clamps

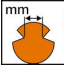
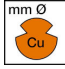

■ **SHK82-B** Guide arm clamp



Application
Steady arm with pivot

Characteristics
Torque 30 Nm

Material
Clamping plates CuNiSi

Article-Nr.									
635.340.000	5.5 - 6.5	80 - 150							0.243

Technical Specifications: **Guide arm clamp SHK82-B**

Article No.	635.340.000
Starting torque	30 N·m
Contact wire groove	5.5 - 6.5 mm
Contact wire diameter	80 - 150 mm
Commercial specification	
Customs number	85359000
country of origin	CH
Logistic specification	
Kilo / piece	0.243 kg

