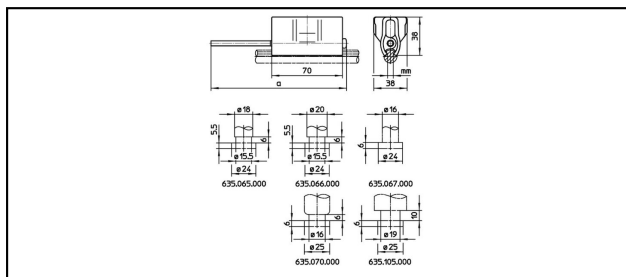


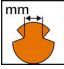
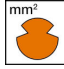

Guide arm clamps

■ **SHK70** Guide arm clamp



Application
Steady arm with pivot

Material
Clamping plates CuNiSi

Article-Nr.									
635.105.000	5.6	80 - 100							0.265
635.067.000	5.6	80 - 100							0.267
635.070.000	6.05	100 - 150							0.255
635.066.000	6.05	100 - 150							0.255
635.065.000	6.05	100 - 150							0.255

Technical Specifications: **Guide arm clamp SHK70**

	635.105.000	635.067.000	635.070.000	635.066.000
Contact wire groove	5.6 mm		6.05 mm	
Contact wire section	80 - 100 mm ²		100 - 150 mm ²	
Commercial specification				
Customs number	85359000			
country of origin	ZA*			
Logistic specification				
Kilo / piece	0.265 kg	0.267 kg	0.255 kg	

	635.065.000
Contact wire groove	6.05 mm
Contact wire section	100 - 150 mm ²
Commercial specification	
Customs number	85359000
country of origin	ZA*
Logistic specification	
Kilo / piece	0.255 kg

