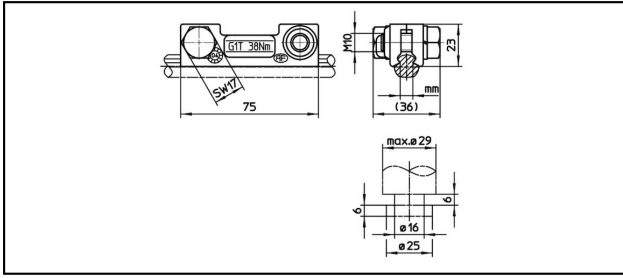


Guide arm clamps

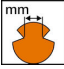
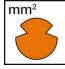

■ **SHK75** Guide arm clamp



Application
Steady arm with pivot

Characteristics
Torque 38 Nm

Material
Clamping plates CuNiSi

Article-Nr.	 mm	 mm ²							 Kg
635.350.000	6.92	100 - 150							0.21

Technical Specifications: **Guide arm clamp SHK75**

	635.350.000
Starting torque	38 N·m
Contact wire groove	6.92 mm
Contact wire section	100 - 150 mm ²
Commercial specification	
Customs number	85359000
country of origin	CH
Logistic specification	
Kilo / piece	0.21 kg

