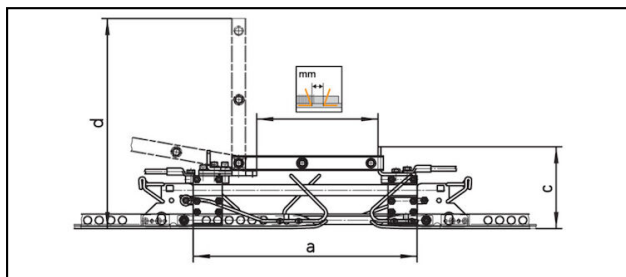


Accessories

■ TM460 Switch blade



Application

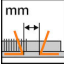
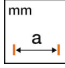
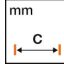


Switch blade for AF section insulators type ZS3, for quick and easy bridging of work site sections.

Characteristics

Opening and closing without electrical tensions.
Telescopic handling bar see type BS2700.

Material




Clamping device stainless steel
Conducting blade CuVSn

Article-Nr.									
655.249.000	330	615	235	580					6

Accessories



Handling bar BS2700

Article-Nr.									
645.114.000	2700 - 4850							2.6	1
645.127.000	2613 - 4813							3.2	2, 3

Technical Specifications: **Switch blade TM460**

Article No.	655.249.000
Arcing horn distance	330 mm
Length a	615 mm
Height c	235 mm
Length d	580 mm
Commercial specification	
Customs number	85353000
country of origin	CH
Logistic specification	
Kilo / piece	6 kg

