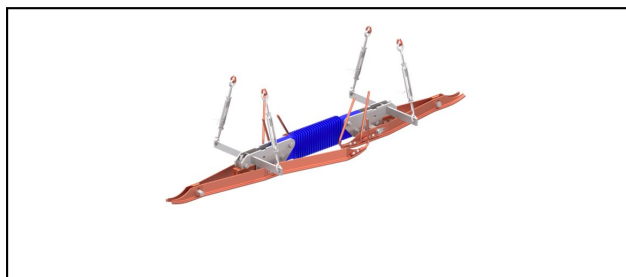


Section insulators

FD1.5



Application

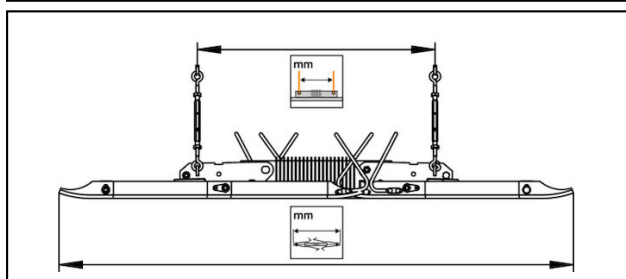
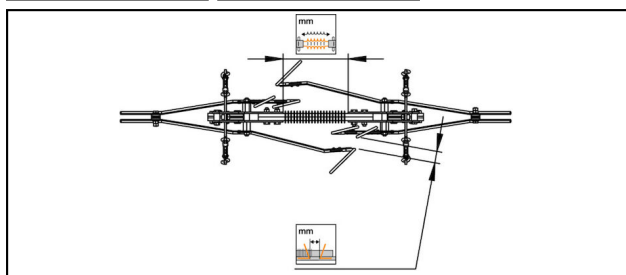
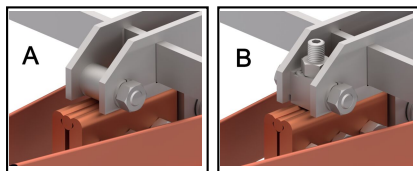
For tramway and light rail  
Maximum speed up to 100 km/h

Material

GRP/silicone, Cu, CuNiSi, stainless steel

Legend

- 1) For 1 contact wire systems
- 2) For 2 contact wire systems
- A) Without adjusting screw for low service loads
- B) With adjusting screw for high service loads



Article-Nr.	mm <sup>2</sup>	mm	mm	mm	mm	mm	mm	mm	kN	
655.336.705	100 - 152	5.6 - 6.9	450	610	435	35	1320	max.10	1, A	
655.336.707	100 - 152	5.6 - 6.9	450	610	435	35	1320	max.32	1, B	
655.336.708	100 - 152	5.6 - 6.9	450	610	435	35	1320	max.2x12	2, B	

Accessories



MH FS/FD/FO

Article-Nr.								Kg	
690.070.000								24.7	1
655.300.000								2.8	2

Accessories



SAL

Article-Nr.		mm							Kg
696.016.010	Al	1610							1.2



## Accessories



## Turnbuckle SSCH200-280

Article-Nr.	mm a	mm b	mm c					Kg	
690.010.727	200 - 280	15						0.163	1, 3
690.023.727	200 - 280	15						0.163	1, 2
690.025.727	200 - 280	18	8					0.163	1, 2
690.035.000	200 - 280	18	8					0.163	1, 3
690.038.000	200 - 280	18	8					0.163	1, 3, 4

Technical Specifications: **FD1.5**

	655.336.705	655.336.707	655.336.708
<b>Contact wire section</b>	100 - 152 mm <sup>2</sup>		
<b>Contact wire groove</b>	5.6 - 6.9 mm		
<b>Creeping distance</b>	450 mm		
<b>Length between suspension</b>	610 mm		
<b>Length between contact wire</b>	435 mm		
<b>Arcing horn distance</b>	35 mm		
<b>Total length</b>	1320 mm		
<b>Recommended service load</b>	max.10 kN	max.32 kN	max.2x12 kN
<b>Specified mechanical load (SML)</b>	80 kN		
<b>Minimum breaking load of the section insulator</b>	80 kN		
<b>Commercial specification</b>			
<b>Customs number</b>	85353000		
<b>country of origin</b>	CH		
<b>Logistic specification</b>			
<b>Kilo / piece</b>	13 kg	13.3 kg	14.5 kg

